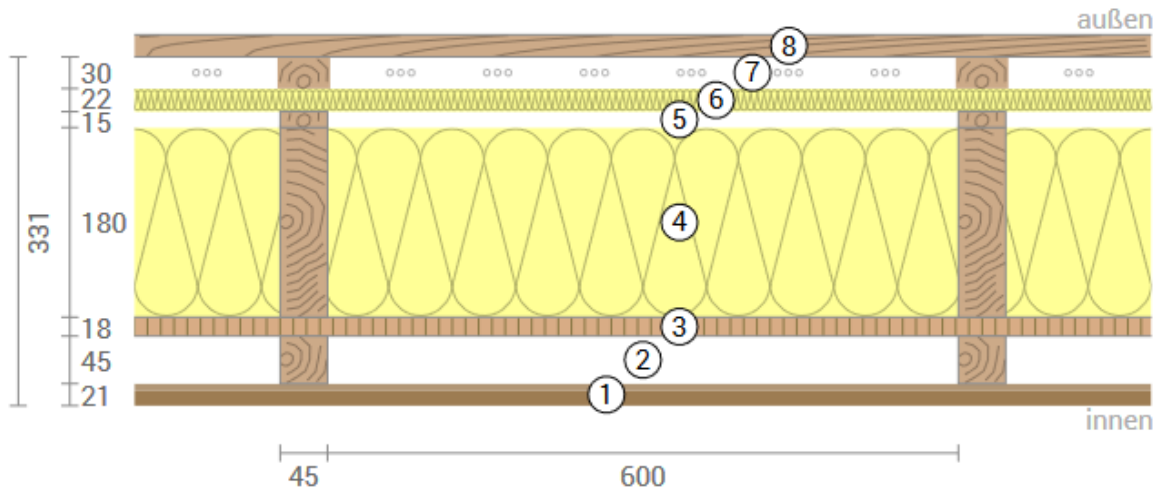


Thule Öko-Haus – Ständerbauweise

Wärmeschutz

$U = 0,18$



- | | | |
|------------------------------|---------------------------|------------------|
| ① Profilholz (21 mm) | ④ STEICoflex 036 (180 mm) | ⑦ Hinterlüftung |
| ② Installationsebene (45 mm) | ⑤ Luftschicht (15 mm) | ⑧ Vorhangfassade |
| ③ OSB-Platte, OSB/3 (18 mm) | ⑥ STEICUniversal (22 mm) | |

